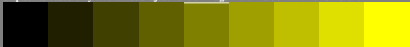


9 step series based only on the visual adjustment of image 1 with value "0.50" or different

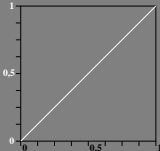


adjust visual equal difference for two of 5 steps



0 $e_{04} = 0,50 \phi$ 1 / 0 $e_{48} = 0,50 \phi$ 1

Output (9 steps)
adjusted spacing
 $0 \leq rgb^*_{out} \leq 1$



go to next image 3

two experimental values:
 e_{04}, e_{48}

equally spaced
 $0 \leq rgb^*_{in} \leq 1$
Input (9 steps)