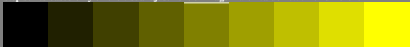


9 step series based only on the visual adjustment of image 1 with value "0.50" or different



9 step series based on all visual adjustments used for output linearization



calculation with visual experimental (e) data adjusted above

$a_1=e_{088}$ ,  $b_1=e_{04} * a_1$ ,  $b_3=e_{48}(1-b_2)+b_2$ ,  $c_2=b_1$ ,  $c_4=b_2$ ,  $c_6=b_3$

$c_1=e_{02} * b_1$ ,  $c_3=e_{24}(b_2-b_2)+b_1$ ,  $c_5=e_{46}(b_3-b_2)+b_2$ ,  $c_7=e_{68}(1-b_3)+b_3$

save 7 data above as text

save 9 data below as text

+0,04 ⬇   +0,04 ⬇   +0,04 ⬇   +0,04 ⬇   +0,04 ⬇   +0,04 ⬇   +0,04 ⬇   +0,04 ⬇   -0,04 ⬇



grey example

difference visible?



0,25 +0,06 ⬇ adjust threshold

0,25 +0,00 ⬇ no change

adjust and proof threshold of the linearized output

restart with image 1

heq01-8a, image 4, adjust visual threshold (+0,04?) of 9 steps; all equal?