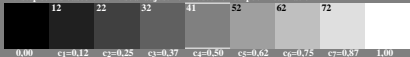


9 step series, sample and surround mean Grey is U41, all samples are lighter based on $p_{08}=0,62$.



9 step series based on all visual adjustments used for output linearization



produced (p) visual experimental data adjusted above

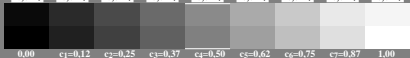
$a_1=i_{08}$, $b_1=i_{04}*a_1$, $b_3=i_{48}(1-b_2)+b_2$, $c_2=b_1$, $c_4=b_2$, $c_6=b_3$

$c_1=i_{02}*b_1$, $c_3=i_{24}(b_2-b_2)+b_1$, $c_5=i_{46}(b_3-b_2)+b_2$, $c_7=i_{68}(1-b_3)+b_3$

save 7 data above as text

save 9 data below as text

+0,04 ◊ +0,04 ◊ +0,04 ◊ +0,04 ◊ +0,04 ◊ +0,04 ◊ +0,04 ◊ +0,04 ◊ -0,04 ◊



grey example
difference visible?



0,25 +0,06 ◊ adjust threshold
0,25 +0,00 ◊ no change

adjust and proof threshold of
the linearized output

restart with image 1

ief50-4a, image 4, produce (p) visual threshold (+0,04?) of 9 steps; all equal?, $\gamma_{rel}=0,67$